

#93

COLOR

2 8va ↓

(A)

The score consists of approximately 12 staves. The top staves include a treble clef with a 3/4 time signature and a 4/4 time signature. The bottom staves include a bass clef. The music is heavily annotated with performance directions such as *pp*, *mf*, *sfz*, and *acc*. There are also various rhythmic markings and dynamic markings like *32*, *44*, and *33*. A large section of the score is enclosed in a box and contains complex rhythmic patterns and notes.

- ON tape -
- | | | | |
|----|-------|-----|----|
| 1. | cl | mix | 10 |
| 2. | ob | | 6 |
| 3. | baron | | 6 |
| 4. | perc | | 3 |
- L. W. 1

22 light strings (attack 6, decay 4, sustain 7, release 4)

52 high strings

32 low strings

fast (♩ = 144)

percussion:

Bass (loud)

Hihat (closed)

x (open)

(accent)

cymbal

(ride)

(B) Spectrum

Handwritten musical score for the first system, consisting of four staves. The top staff is in treble clef, and the bottom three are in bass clef. The music includes various note values, rests, and accidentals. Percussion symbols are present, including a hihat symbol with 'x' for closed and 'o' for open, and a cymbal symbol with a vertical line for ride. A box containing the number '1' is located at the beginning of the first staff.

Handwritten musical score for the second system, consisting of four staves. The top staff is in treble clef, and the bottom three are in bass clef. The music includes notes, rests, and accidentals. A box containing the number '5' is located at the beginning of the first staff. The word 'Fine' is written at the end of each of the four staves.

Handwritten musical score for the third system, consisting of four staves. The top staff is in treble clef, and the bottom three are in bass clef. The music includes notes, rests, and accidentals. The word 'D.C.' (Da Capo) is written at the end of each of the four staves. There are some handwritten annotations above the staves, including 'L. 2. 1' and 'L. 2. 2'.

play 2x

Improvise: ON different channels & registers & combine using unmeasured p o - slow

©

I Red (CDEGA) # 82 vreal harmonica (oboe) middle

II Yellow (AbBbCEbF) # 22 light strings (flute) high

III Blue (BD bE G bAb) # 36 buddy

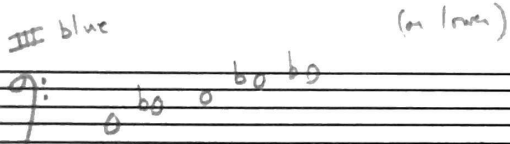
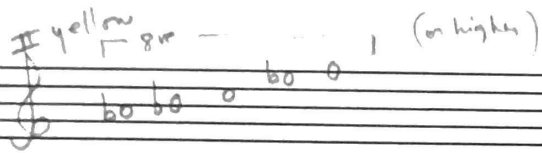
channel 1

channel 2

channel 3 & 4

- A. play channel 3+4 (Blue)
- B. channel 1+2 (Red + yellow orange?)
- C. play all channels together

I Red



Spectrum (1. an appearance, image or specter)
 2. any of various arrangements of colored bands or lines together with invisible components at both ends.
 Specter - 1. an apparition, the appearance of a person who is dead, a ghost.

J = 40
slow + loud, sfz

#33 hammer (dy)
#41 201's
#56 Drum (bl.)

Handwritten musical score for a piano piece, measures 1-8. The score is written on two staves (treble and bass clef) with a 4/4 time signature. It features complex chordal textures with many accidentals (sharps, flats, naturals) and dynamic markings such as *ff* and *f*. Above the staves, there are handwritten notes including "a", "Ab", "Gb", "g", "a", and "Ab". Below the staves, there are notes like "Lm Tr", "Hi Tr", "U L Tr", "H L Tr", "L 8", and "A1". A box containing the number "5" is visible above the fifth measure.

J = 40 Brandy, choral-like (dingo)

Handwritten musical score for a piano piece, measures 9-14. The score is written on two staves (treble and bass clef) with a 4/4 time signature. It features a melody in the treble clef and a bass line in the bass clef. There are various chordal accompaniments. Below the staves, there are handwritten notes: "Bon", "Sona", "ENOW", "Bon Sona", "Lad Sqa", and "b +". A box containing the number "10" is visible above the first measure.

Handwritten musical score for a piano piece, measures 15-18. The score is written on two staves (treble and bass clef) with a 4/4 time signature. It continues the melodic and harmonic themes from the previous section. A box containing the number "15" is visible above the first measure of this section.

Handwritten musical score for a piano piece, measures 19-22. The score is written on two staves (treble and bass clef) with a 4/4 time signature. It concludes the piece with a final chord and some melodic fragments. A box containing the number "19" is visible above the first measure of this section.

#16 - 10 m
#17 - 11 m
#18 - 7 m

total 40 measures

ho

2.1 cl. 1st & 2nd (sustains 7)
2.1 fmrbr (sustains 7)

01 clarinet 1st
71 clarinet 2nd

①

dolce, legato
flowing, soft ♩ = 66

Handwritten musical notation for the first system, featuring a treble and bass clef with a 4/4 time signature. The music consists of quarter and eighth notes with various accidentals (flats and naturals). A dynamic marking 'mp' is present in the bass staff.

Handwritten musical notation for the second system, continuing the piece with similar note values and accidentals as the first system.

♩ = 132 (♩ = 66)

Handwritten musical notation for the third system, showing a double bar line and a change in notation style, possibly indicating a new section or measure rest.

20

25

30

- DRUM PATTERNS
- #19 - 1 mea (2 mea) clap for
 - #20 - 10 mea
 - #21 - 1 mea (4 mea)
 - #22 - 16 mea
 - #23 - 1 mea (4 mea)

chimes

cymbal

Song #30